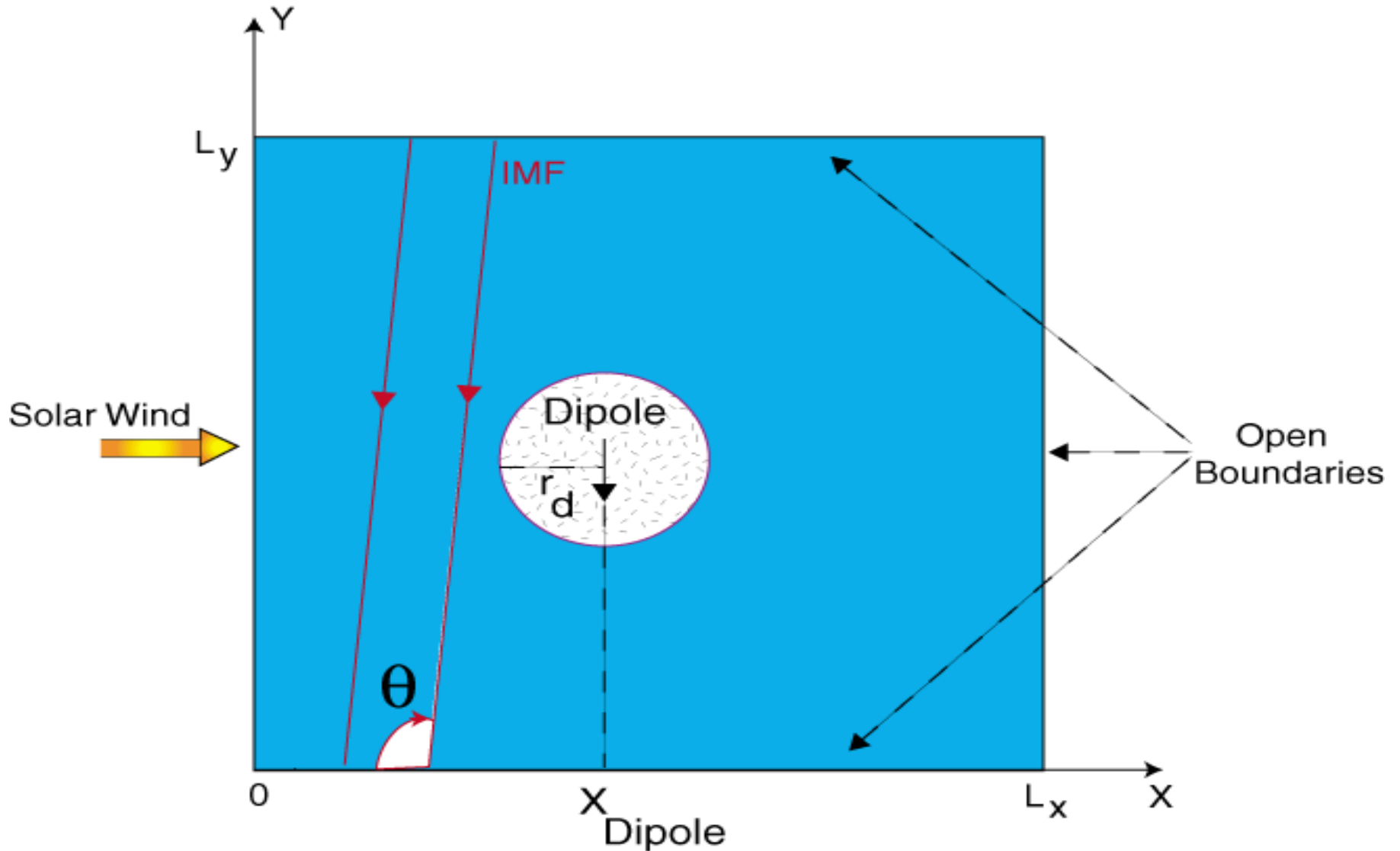


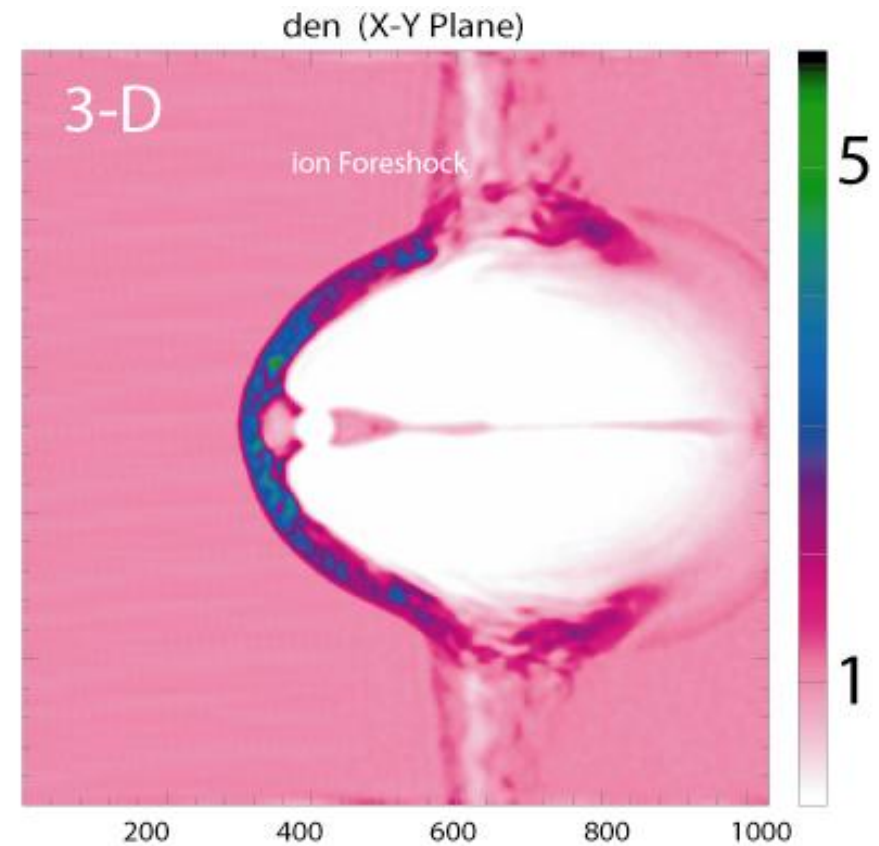
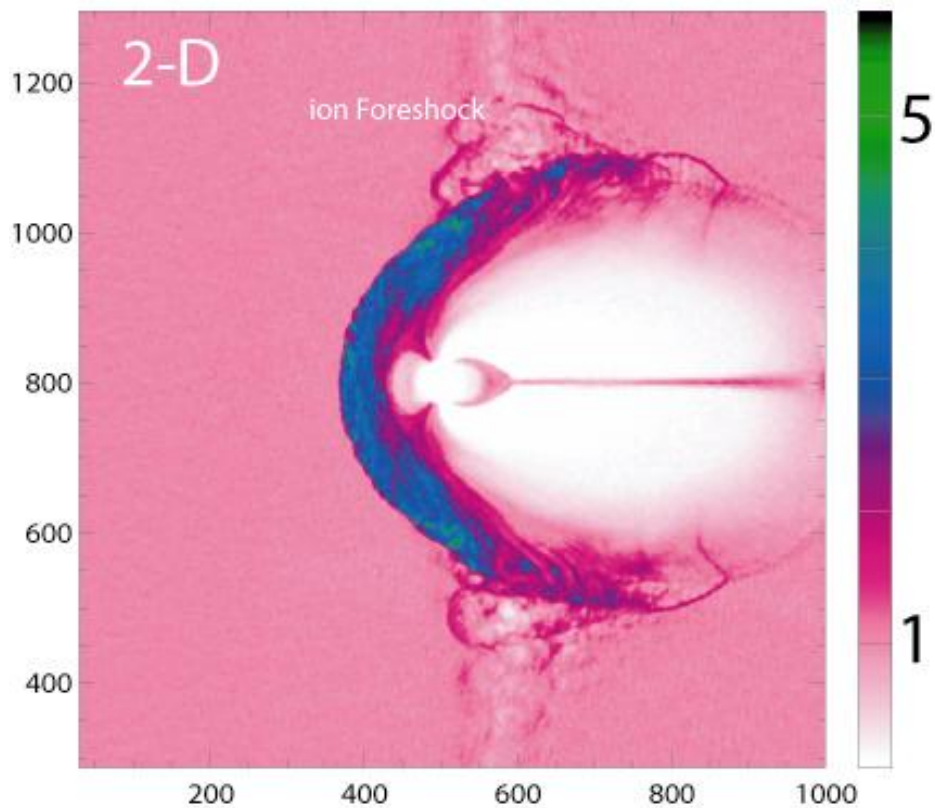
# Formation of Plasmoids and Magnetic Flux Ropes during Southward IMF

H. Karimabadi, N. Omid, H. X. Vu

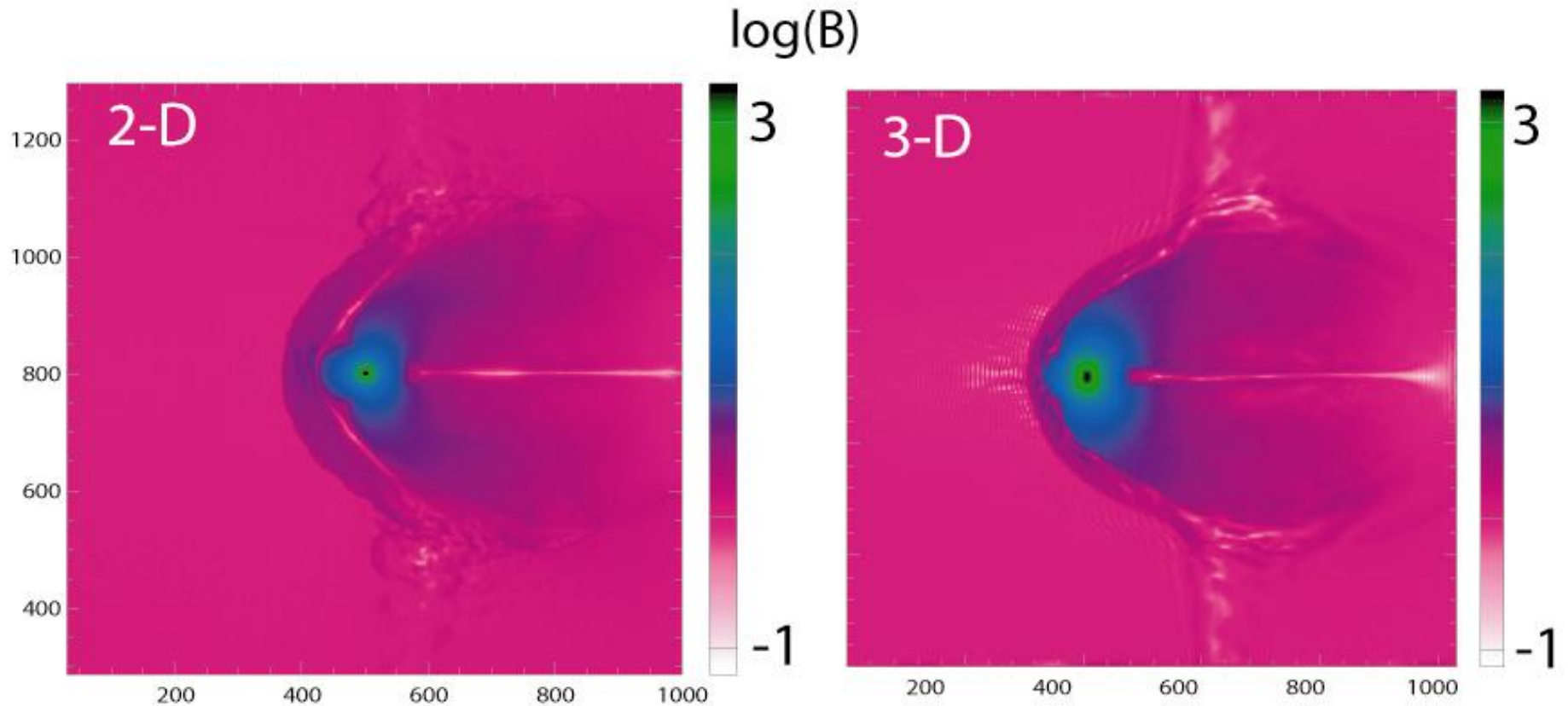
# Simulation Model



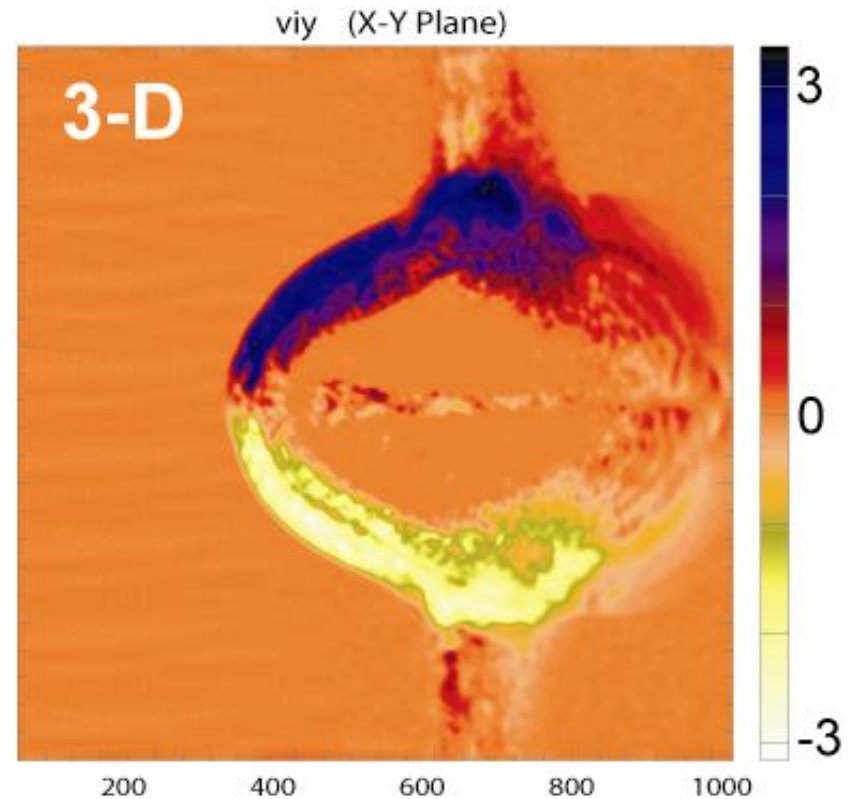
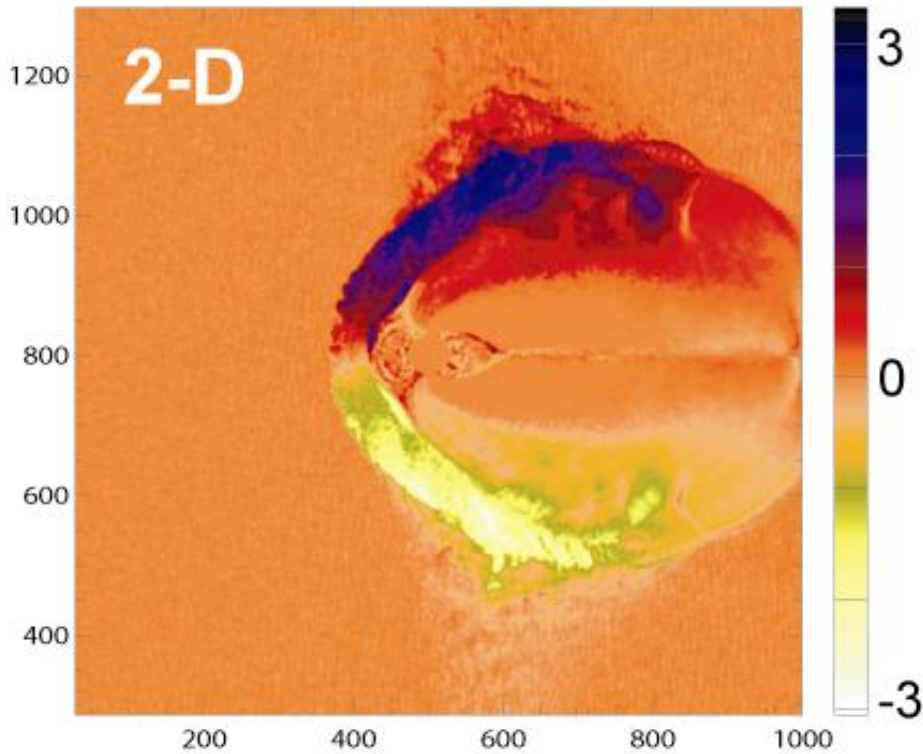
# Comparison of 2D and 3D (density)



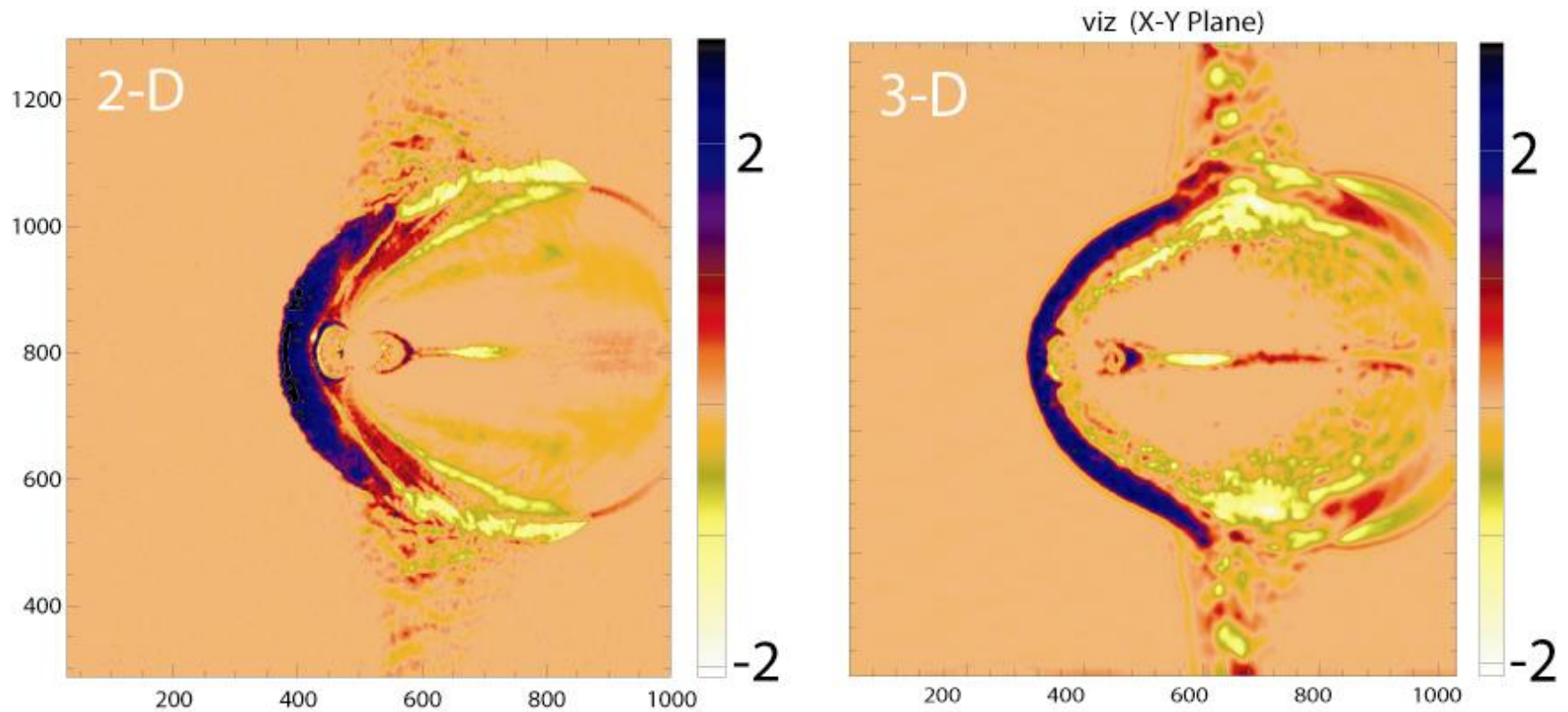
# Comparison of 2D and 3D, Cont'd



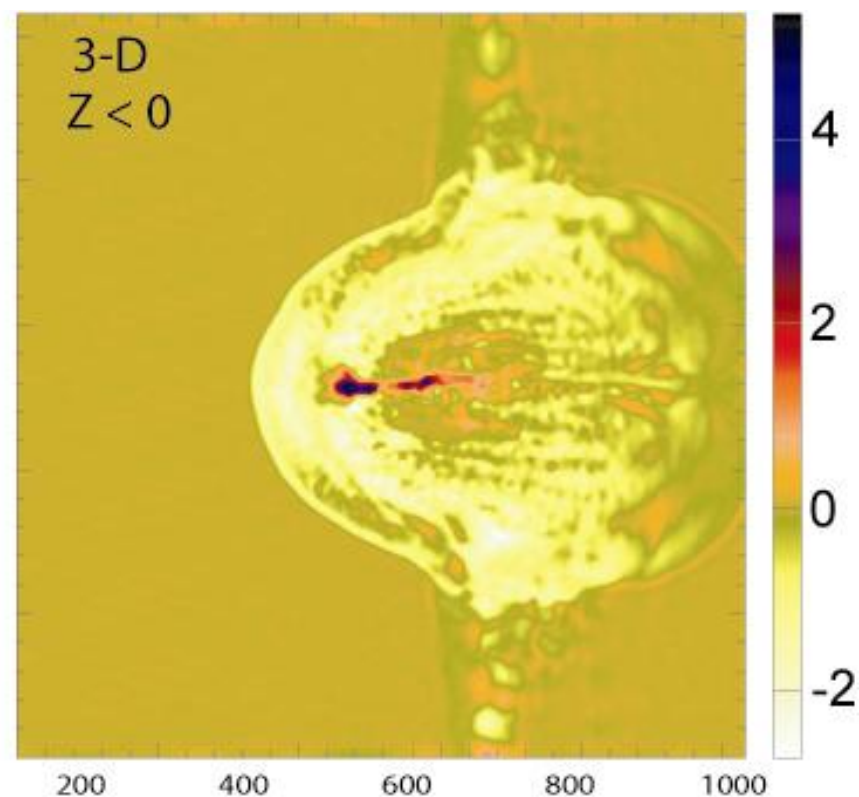
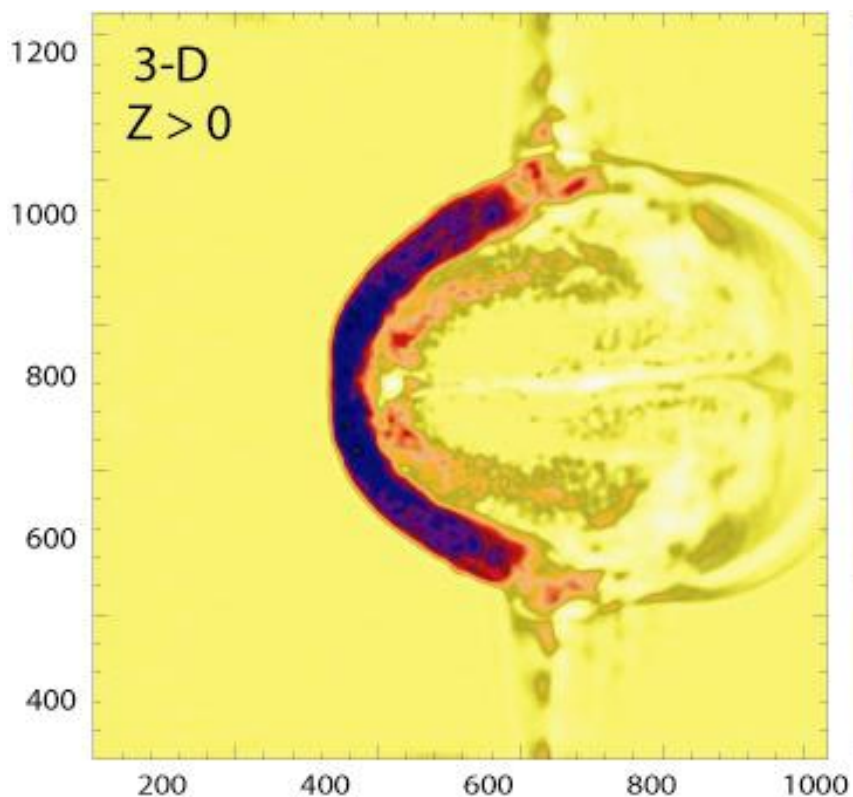
# Comparison of 2D and 3D, Cont'd



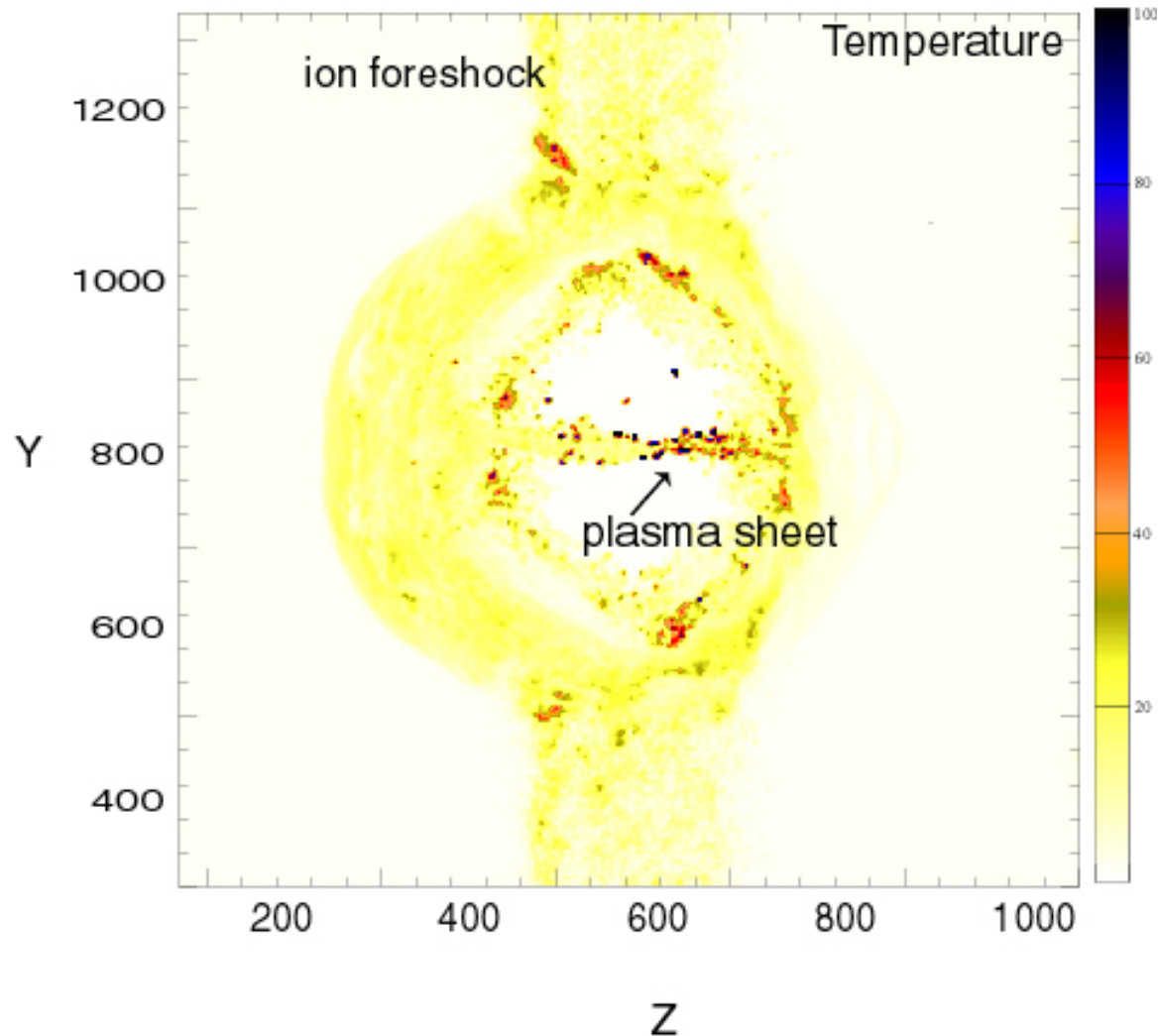
# $V_z$ in the Noon-Midnight Meridian Plane



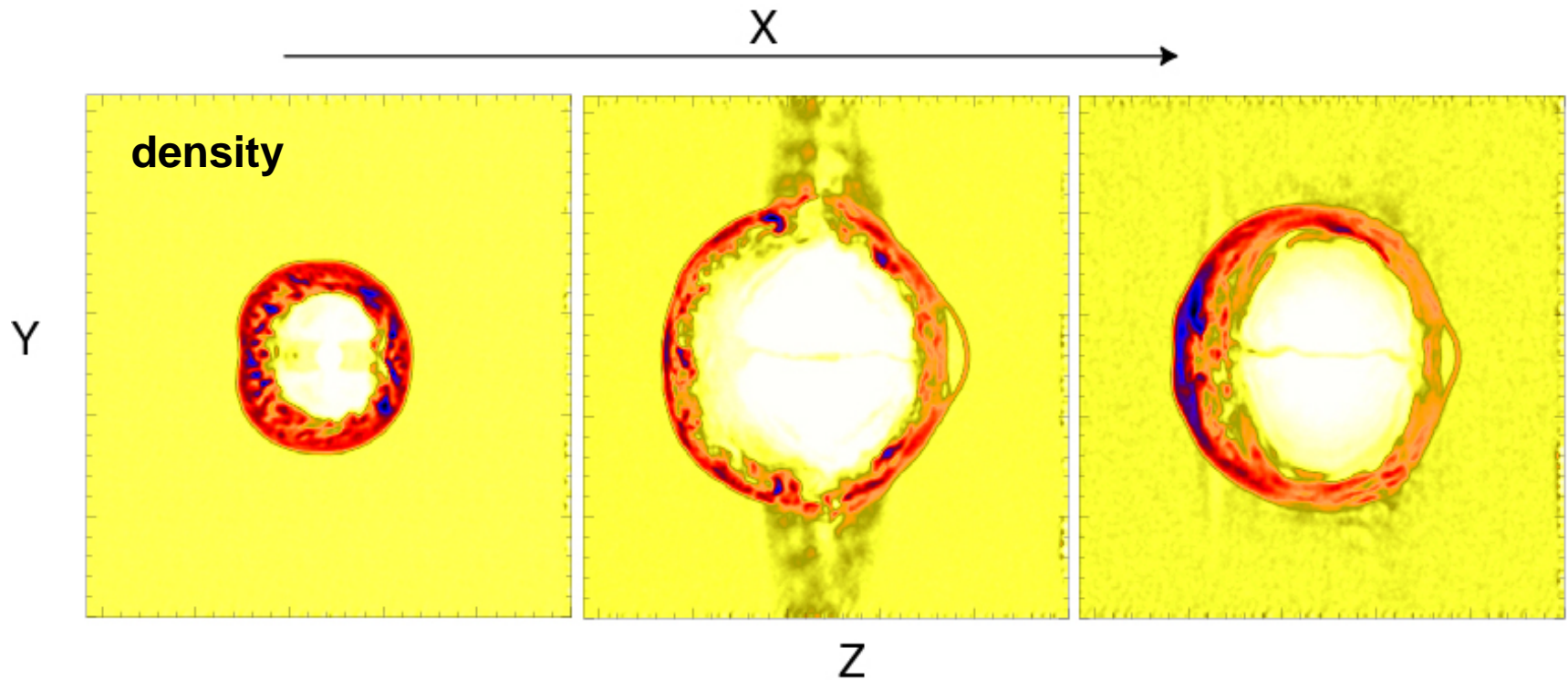
# 3D Flow Diversion in $-z$ and $+z$ (dawn-dusk)

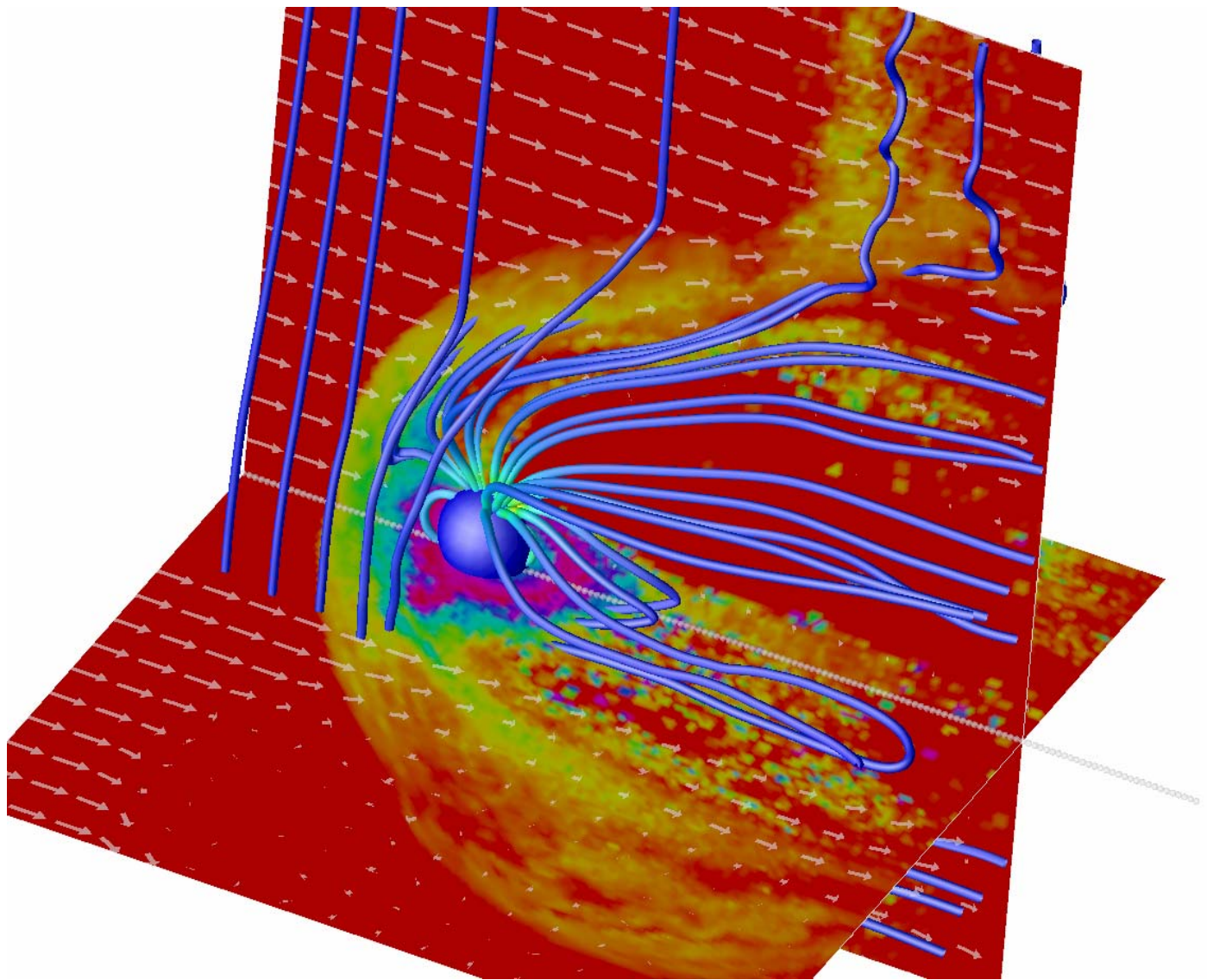


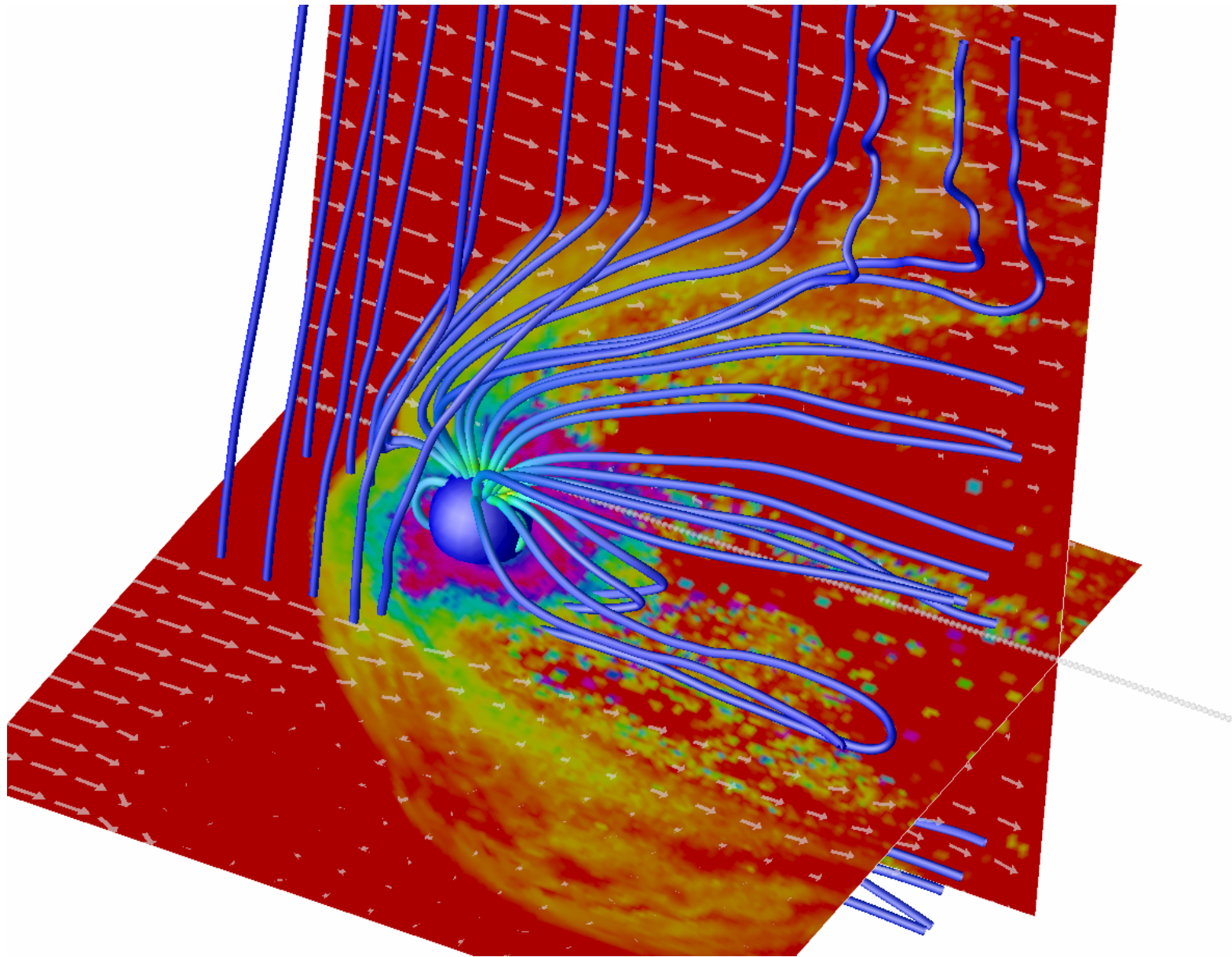
# Finite Extent of the Plasma Sheet

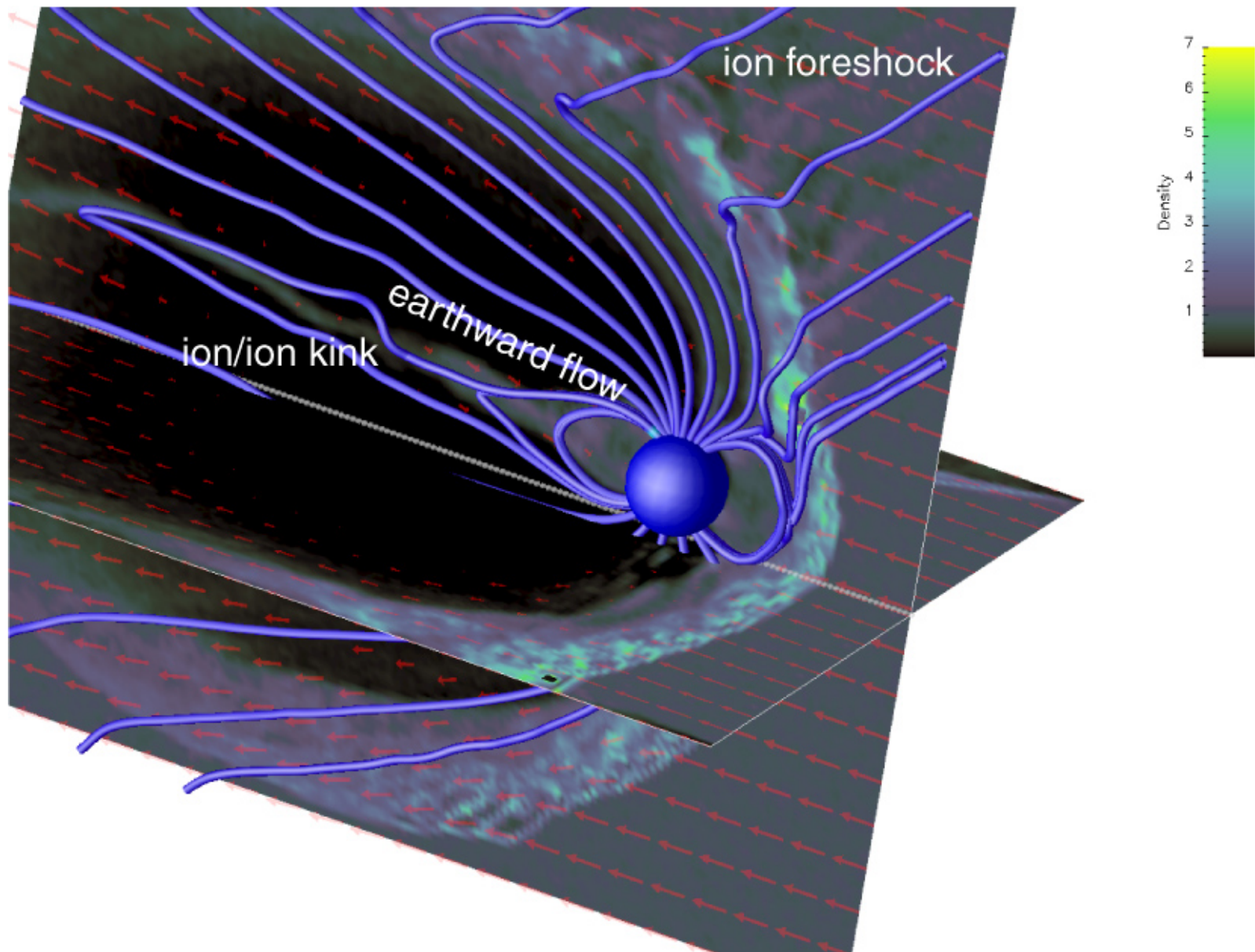


# Asymmetry in Z

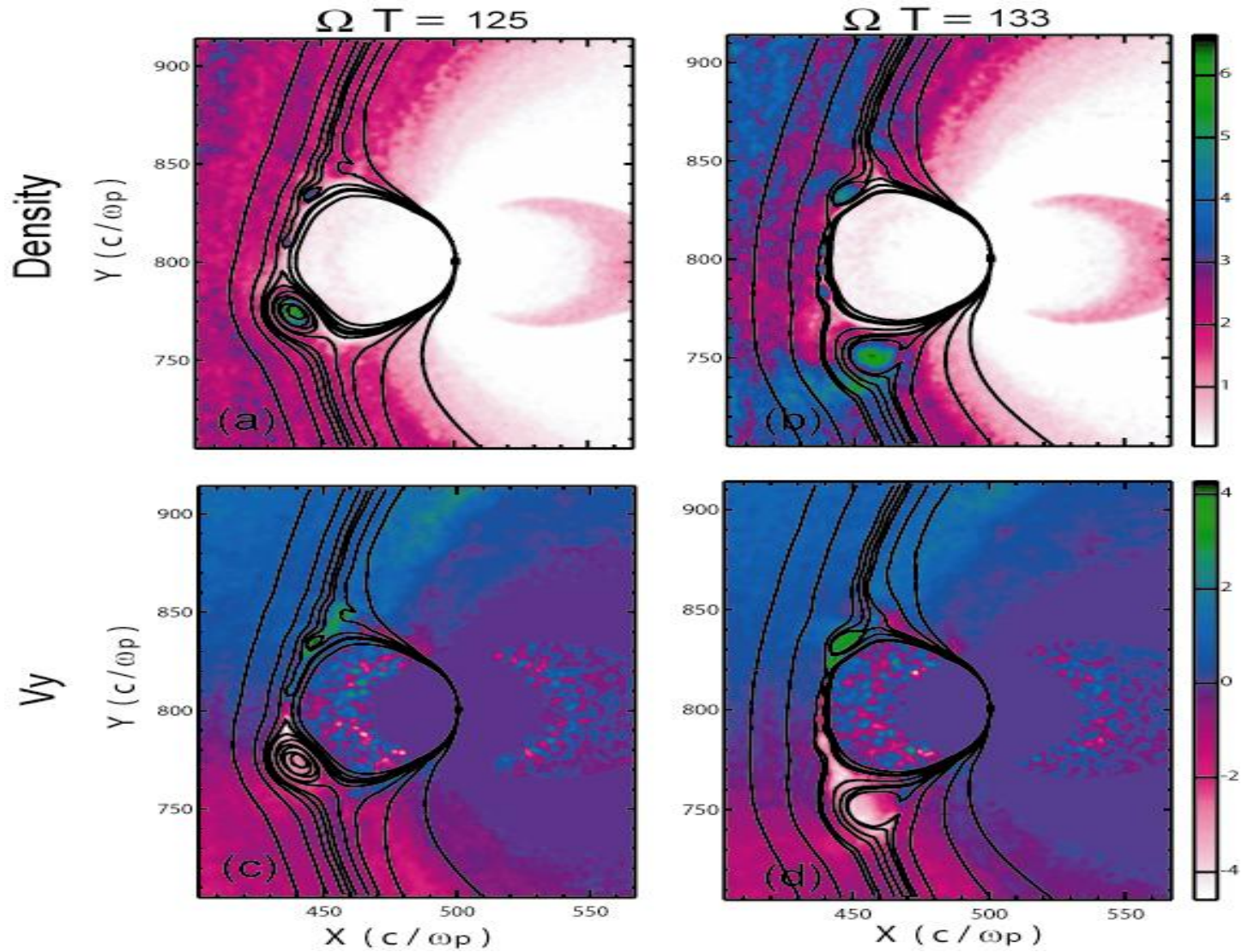








# Reconnection



# Prediction of Onset vs Global Hybrid Result

Tearing Mode at the Magnetopause

